

Impedance Cardiography Signal Enhancement through Block Based Adaptive Cancellers for Distant Medical Care



SoniyaNuthalapati, C. Arunabala, Vadlamudi Vinaykumar, Rayanuthala Praveen Kumar, Suraparaju Sai Pavan Kumar, Vare Rudra Reddy

ABSTRACT: *The impedance Cardiography (ICG) assists the impedance occurred in the heart. The ICG also known as Thoracic Electro Bio-Impedance (TEB). This projects various flexible and mathematical reduced adaptive methods to visualize the extreme clear TEB modules. In the medical premises, TEB wave notifies the several physiological and non-physiological incidents, that covers small characteristics which are predominant for finding the volume of the stroke. In addition, mathematical difficulty is a significant constraint to novel healthcare observing tool. Therefore, the paper project novel wave working methods for TEB improvement in isolated arrangements. So that we selected higher preference adaptive eliminator as a fundamental constituent in the procedure. To recover the original signal, convergence rate, to minimize mathematical difficulty of the wave working method, we relate the data normalization to extract the ideal wave. The projected realizations are simulated with practical TEB waves. At last, outcomes proves projected extracted normalized higher order filter is appropriate to realistic medical arrangement.*

Keyword: *In addition, mathematical difficulty is a significant constraint to novel healthcare observing tool.*

I. INTRODUCTION

In [1] yanqun wang et al. presented paper based on the finite element modelling to discuss about the causes of impedance variation for band electrode (resembles mixed effect) and spot electrode (changed with electrode location) ICG, these cause mainly discusses about the variation in electrode that occur due variation impedance and this mainly centers about the stroke volume (SV) this outcome shows consequence of ventricular contraction which opposes the variation in systole these all explanation gives band electrode ICG is the best method. In [2] W.N. Hubbard et al. described that mainly the patient gets uncharacteristic diastolic changes in O wave In [3] Muhammad Zia Ur Rahman et al. proposed a paper on various efficient and mathematically reduced adaptive

algorithm to show better results in TEB components by considering the physiological and non physiological phenomenon In [4] Allan Kardec Barros et al.

Studies about the Scaled Fourier Linear Fombiner (SFLC) results based on R-R period of ECG is projected It determines the impedance cardiographic wave and take away the clatters with the help of LMS algorithm. In [5] Allan Kardec Barros et al. demonstrate about the MSE performance related simple enhancers are evaluated by LMS algorithm In [6] A. Ozan Bicen et al. discuss on multiple regression is considered for different periods to minimize the mean absolute in accuracy in the Root Mean Square Error. In [7] Madhavi Mallam et al. explained about the removal of artifacts in adaptive filters by utilizing Wave let Transform instead of a reference signal by considering physiological and non physiological artifacts In [8] Shafi Shahsavari Mirza et al. illustrate about the thoracic electrical Bio impedance which studies on stroke volume by taking physiological and non physiological artifacts for elimination of artifacts different method are introduced in that Step Variable LMS (SVLMS) correlated SEU performs improved in filtering method compared over different noises In [9] K. Boone et al. conveys about the EIT imaging which shows difference among various tissue categories to show exact imaging by exploiting multi and wide frequency collection and describes the straight measurement of the magnitude dZ/dt max out proportional to blood pressure indication in converse behavior In [10] Toney Sebastian et al. presented a paper based on wavelet technique to remove the respiration and motion artifact, in this a scale related thresholding technic is proposed In [11] Vinod K. Pandey et al. studies says that amplitude tracking method is used to get the efficient input dynamic range and also for the elimination of base line wandering In [12] E. Pinheiro et al. projected a method on using impedance cardiography with the help of accompanied embedded sensors such that they can monitor health conditions of the patient In [13] Vinod K. Pandey et al. described the impedance cardiography to calculate stroke volume by considering the dimensions like articular polarization will eliminates the respiratory and moving artifacts occur due to baseline wandering In [14] Vinod K. Pandey et al. presents a paper based on lms adaptive technic for the removal of respiratory and motion artifact happened due to base line wandering. this technic gives a perfect results compared over Doppler echo cardiography In [15]

Revised Manuscript Received on January 30, 2020.

* Correspondence Author

N. Soniya*, KKR & KSR Institute of Technology and Sciences, Vinjanampadu, Guntur, India.

Dr. C. Arunabala, Professor, Department of ECE, KKR & KSR Institute of Technology and Sciences (KITS), Guntur, India.

Vadlamudi Vinaykumar, Department of ECE, KKR & KSR Institute of Technology and Sciences (KITS), Guntur, India.

Rayanuthala Praveen Kumar, Department of ECE, KKR & KSR Institute of Technology and Sciences (KITS), Guntur, India.

Suraparaju Sai Pavan Kumar, Department of ECE, KKR & KSR Institute of Technology and Sciences (KITS), Guntur, India.

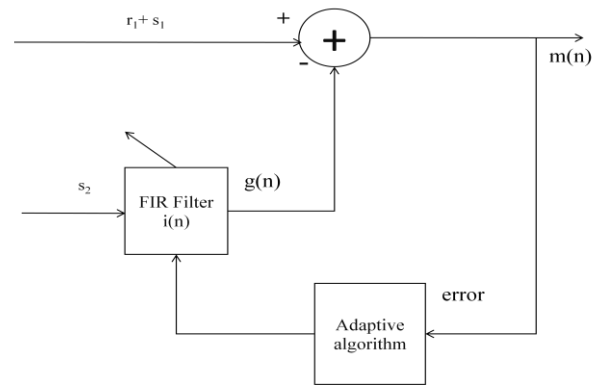
Vare Rudra Reddy, Department of ECE, KKR & KSR Institute of Technology and Sciences (KITS), Guntur, India.

© The Authors. Published by Blue Eyes Intelligence Engineering and Sciences Publication (BEIESP). This is an [open access](https://creativecommons.org/licenses/by-nc-nd/4.0/) article under the CC-BY-NC-ND license <http://creativecommons.org/licenses/by-nc-nd/4.0/>

Madhavi Mallam et al. proposed a paper based on the mixed model related to wavelet decomposition and an adaptive filters in some problematic situations to filter weights are negative and occurs convergence variance such that they introduced an exponential non-negative and normalized non negative methods to restore filter weights so that SNR value is achieved and the base line wandering artifact In [16] Abdul Qadir Javaid et al. projects a paper on the affiliation among ballistocardiogram (BCG), thoracic and articular movement flutters have taken blood pressure cardiac out-put with different lengths. compared to other ICG and BCG will give the perfect outcome In [17] R.P. Patterson et al. this paper studies says that an inter relation among volume deviation at some place and stroke volume for the perfect people this impedance cardiography method mostly observes the O-wave regarding heart misfunctionality. In [18] Karin Jarverud et al. illustrates the relation among impedance and blood pressure level in ECG this comes under thesis in this they studied about the variations caused in ventricles during the bio-impedance application. In [19] Nallamothu Sruthi Sudha et al. Projects on the several Block Based methods and that linked to the EEG noises removal. In [20] Xavier Navarro et al. discussed on the ECG signal elimination from the EEG during the mixing up of empirical method and also at the time of purifying the signal. In [21] S. Olmos et al. presented the paper based on the BLMs and BRLS techniques at which these are used to apply the allusion input at the perfect time. In [22] D-H Shin et al. they researches about the new techniques related to Block based and then eliminating the Gaussian noises by applying that new methods. In [23] M J. Narasimha et al. these people studied about the Block algorithms based on Time relation and they also used these three transforms. In [24] Y. Zhang et al. projects a paper by using the Threadmill exercise and by practically observing the cardiac output. In [25] E. Raaijmakers et al. analyzed about the Thoracic Electrical Bio-impedance using a mathematical part based on the current terms. In discusses about the CT scan and X-rays during the time of effect caused by the noises in TEB. In [26] presents the paper about how the impedance varies during the cardiac and respiration observations. In [27] B. Balestra et al. studies the electrodes functionality during the cardiac result study. In [28] K. R. Visser et al. elaborates the dog thoracic during the blood flow, using the blood flow measurement how the cardiac output is giving the result. It discusses the purification in TEB signal when the non-correlated artifacts occurs. In [29] C. N. Riviere et al. projects about the wireless network observation by connecting with the computer and represents the bandwidth at which the Cardiac result analysis and stroke volume, changes according to the TEB measurements.

II. MATHEMATICALLY EFFICIENT BLOCK BASED ENHANCING METHODS

Block Diagram of Adaptive Enhancer:



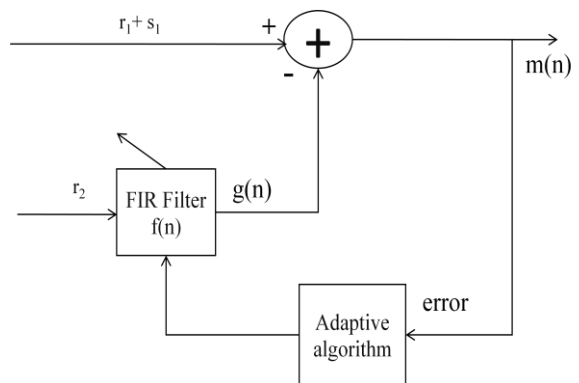
(a)

Fig 1(a) views an enhancer having a parent input which is an TEB wave r_1 with extra noise s_1 whereas the allusion input is noise s_2 mainly stored from an additional producer of noise s_2 that is interrelated to an another manner with s_1 . Suppose Enhancer outcome is z and the enhancer noise is $m = (r_1 + s_1) - r$, then $m^2 = (r_1 + s_1)^2 - 2g(r_1 + s_1) + g^2$

$$= (s_1 - g)^2 + r_1^2 + 2r_1s_1 - 2gr_1 \quad (1)$$

Given that signal and noise will not get mixed up and then, so mean -squared mistakes (MSE) are

$E[m^2] = E[(s_1 - g)^2] + E[r_1^2]$ (2) Reducing the MSE output in a filter noise outcome will be considered as the finest least - squares approximation wave r_1 . The adaptive enhancer exposes about how to take out the wave, or to remove noise, in the way of repetitively reducing the MSE between the parent and allusion keys.



(b)

Fig.1. Two adaptive enhancer compositions. Type 1(a): allusion key is with clutter s_2 interrelated with noise s_1 : the preferred signal visibles at $m(n)$. Type 1(b): allusion key with wave r_2 interrelated to signal r_1 : the preferred wave occurs at $g(n)$.

Fig 1(b) demonstrates other status at which the cardiogram wave is stored from large number of conductor leads. The initial input $r_1 + s_1$ will picks up the required leads. An allusion wave r_2 is caused from a subsequent lead which is error free.

The signal r_1 will be taken out with the help of MSE between the initial and the allusion keys. Utilizing a structure which is equals to (1) that is proficient with

$$E[m^2] = E[(r_1 - g)^2] + E[s_1^2] \quad (3)$$
shortening the MSE differences to a filter outcome z that's the simplest least-squares approximation for r_1 .

Fundamental Least Mean Square Algorithm: The LMS algorithm is a basic one for shortening the MSE between main and allusion keys. Typically, a diagonal filter composition is occupied and the filter coefficients or influences are caused utilizing the LMS technique.

The LMS method is printed as

$i_{t+1} = i_t + 2\mu m_t k_t$ where $i_t = [i_{1t} i_{2t} \dots i_{jt} \dots i_{nt}]^T$ is a set of filter masses at time t , $k_t = [k_{1t} k_{2t} \dots k_{jt} \dots k_{nt}]^T$ is the primary vector at duration t of the models taken out from the allusion key, c_t is the required main input taken from the TEB to be purified, g_t is the filter results that about which is the most excellent least squares approximation of c_t is $m_t = c_t - g_t$.

Step size constraint μ is experientially picked to construct convergence at a required tempo; the superior its assessment, the speedy the convergence is $=1/(4\mu\epsilon)$ where ϵ is the major eigenvalue of the autocorrelation matrix of the allusion key. This constraint possibly not be so outsized, that it occurs too much of Misadjustment or instability, $1/\epsilon > \mu > 0$.

III. PROJECTED METHOD

In this one, we utilized the adaptive filter methods such as Normalized Least Mean Square (NLMS) algorithm. The alternative of more number of weight approximates will be caused in NLMS in the occurrence of noise or in permanent word length executions, notices overflow, and corrupted act so that we approaches to leaky NLMS technique which is related to leakage factor at which this constants the mass and also weight drift difficulty and also due to hardware cost in leaky NLMS we came over to a Block Based Normalized LMS (BBNLMS) and also due to its computational complexity requirement evaluated over other Block Based Normalized Sign Regressor LMS (BBNSRLMS). So BBNLMS technique is aimed for evaluation. The BBNSRLMS technique is initiated down by means of the constraint like blocks, filter length and mathematical operations like MAC (Multiplication and Accumulation Unit) and Number of Divisions these are the major constraints participates a crucial position. The act measures like convergence rate, Misadjustment or noise elimination and stability, are scrutinized with step size limitation μ and application blocks and picking up the maximum Normalized values to assemble the favored conditions, the step size limitation and flow of the blocks by selecting maximum normalized have to be organized.

The filtering and blocks weight adaption of BBNLMS related adaptive filter method by means of the number of filter (blocks) is specified by the fundamental adaptive filter represents an N -weights transversal adaptive enhancer. The enhancer primary key, $t(n)$, required outcome, $c(n)$, and the enhancer outcome, supposed as real charged progressions. The tap weights $u_0(n), u_1(n), \dots, u_{N-1}(n)$ are choosed so then the distinction in inaccuracy is resembled as

$$z(l) = \sum_{m=0}^{N-1} u_m(l) t(l-m) \quad (6)$$

$$e(l) = c(l) - z(l), \quad (7),$$

and then we go for Sign Error Least Mean Square (SLMS) method. This can be achieved by conformist LMS recursion, by substituting $e(n)$ by the symbol. This guides in subsequent recursion;

$$u(l+1) = u(l) + 2\mu \text{sign}(e(l)) t(l) \quad (8)$$

Due to the substitution of $e(n)$ by its sign, accomplishment of this recursion is lesser than the conformist LMS recursion. So that we go for Signed Regressor Least Mean Square (SRLMS) technique occurred from the straight LMS recursion, substituting the strike-primary key vector $t(n)$ with the vector $\text{sign}(t(n))$, which shows signed regressor-recursion then

$$u(l+1) = u(l) + 2\mu e(l) \text{sgn}(t(l)) \quad (9)$$

and next we gone for Sign- Sign Least Mean Square (SSLMS) Algorithm as known from its given name, mixes the signed functionalities, answering to a subsequent substitutes;

$$u(l+1) = u(l) + 2\mu \text{sign}(e(l)) \text{sign}(t(l)) \quad (10)$$

$$w(l+1) = w(l) + 2\mu \frac{e(l)}{|e(l)|} (x(l)) \quad (11)$$

since $\text{sign}(e(l)) = \frac{e(l)}{|e(l)|}$. This rescheduled as

$$w(l+1) = w(l) + 2\mu \frac{\mu}{|e(l)|} e(l) (x(l)) \quad (12)$$

We deemed the LMS recursion and substitute the permanent step-size μ by a data-dependent $\mu(n)$ given by

$$u(l+1) = u(l) + 2\mu(l) e(l) t(l), \quad (13)$$

Above equation represents the NLMS algorithm. Having some disadvantage in NLMS we gone for a Normalized Sign Regressor LMS (NSRLMS) Algorithm so that the weight modernize equation of NSRLMS is occurred from the NLMS recursion substituting the primary key vector $t(n)$ by vector $\text{sgn}\{t(l)\}$.

$$u(l+1) = u(l) + \mu(l) \text{sgn}\{t(l)\} e(l) \quad (14)$$

This Normalized Sign LMS (NSLMS) Algorithm is obtained from NLMS recursion by substituting $e(l)$ by its symbol. This follows up subsequent substitution:

$$W(l+1) = w(l) + \mu(l) x(l) \text{sgn}\{e(l)\} \quad (15)$$

and for further improvement we selected the Averaged Sign - Sign LMS modes (NSSLMS) occurs by mixing normalized symbolized - substitute and normalized symbolized substitutes, showing the below equation:

$$u(l+1) = u(l) + \mu(l) \text{sgn}\{t(l)\} \text{sgn}\{e(l)\} \quad (16)$$

and then we approached the Block Based Averaged Least Mean Square (BBNLMS) modes. To shorten calculation difficulty we take on block processing of normalized algorithms here we have taken the overlying blocks. In the block based method input information is divided as pieces and the highest striked piece is utilized in calculation of movable step size parameter. With this, the weight modernize links for NLMS as shown and its sign based versions NSRLMS, NSLMS and NSSLMS given by (4.115), (4.116) and (4.117) takes the subsequent form. Currently the weight modernize link of Block Based NLMS (BBNLMS) algorithm for $x_{\text{Max}} \neq 0$ and $\epsilon = 0$ is printed as,

$$u(l+1) = u(l) + \frac{\mu}{x_{\text{Max}}^2} t(l) e(l) \quad (17)$$

and then we researched over the Block Based Normalized Sign Regressor Least Mean Square (BBNSRLMS)

Algorithm

$$u(l+1) = u(l) + \frac{\mu}{x_{max}^2} \text{sign}\{t(l)\} e(l) \quad (18)$$

and then we processed over the Block Based Normalized Sign Least Mean Square (BBNSLMS) Algorithm

$$u(l+1) = u(l) + \frac{\mu}{x_{max}^2} t(l) \text{sign}\{e(l)\} \quad (19)$$

after that we follows the Block Based Normalized Sign-Sign Least Mean Square (BBNSLMS)Algorithm

$$u(l+1) = u(l) + \frac{\mu}{x_{max}^2} \text{sign}\{t(l)\} \text{sign}\{e(l)\} \quad (20)$$

So at last, we concluded that the BBNSRLMS have the less number of Computation in the means of MAC's, Number of divisions and also that this is independent of the filter length.

The proposed algorithm is applied using a flowchart as shown below:

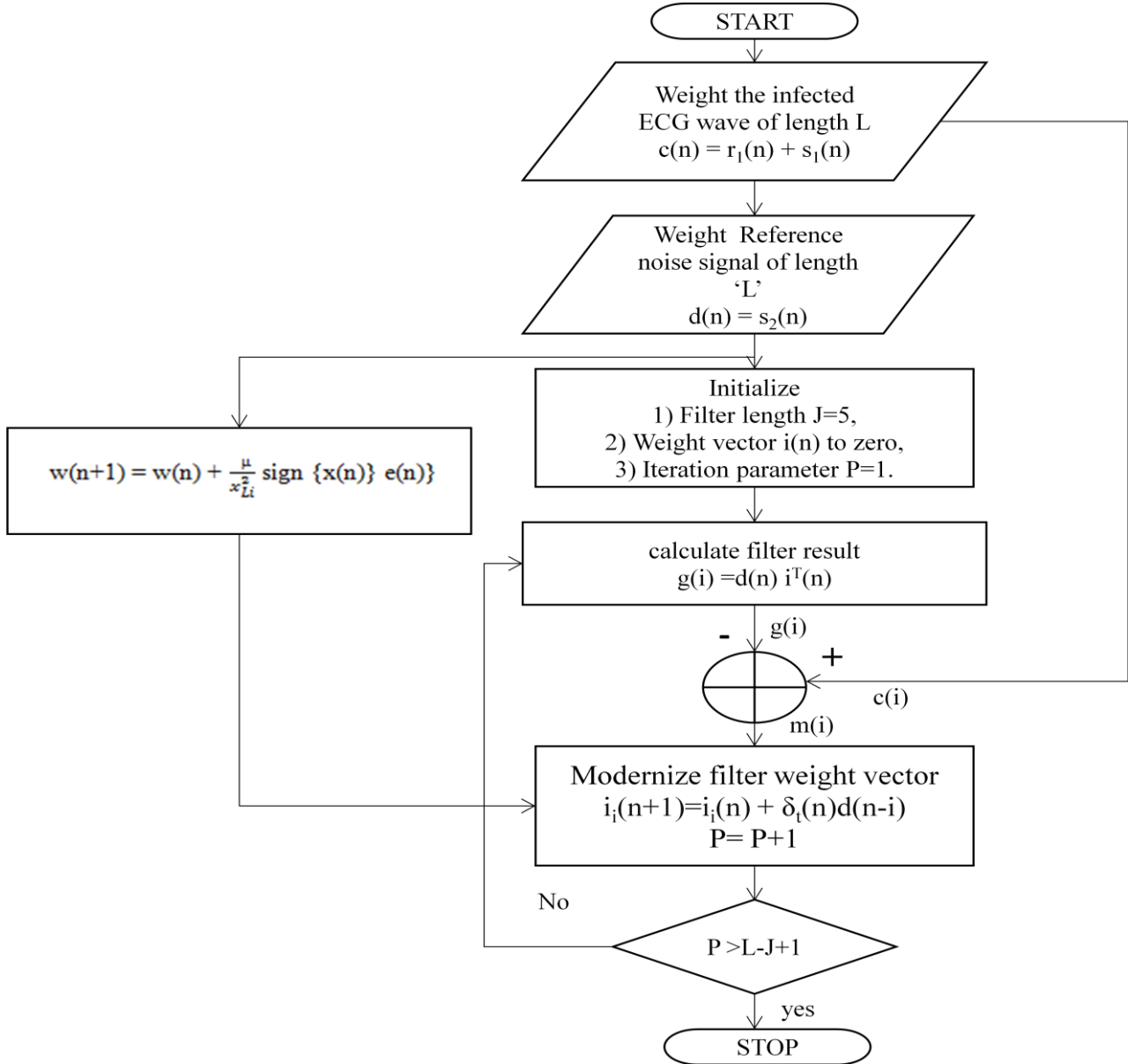
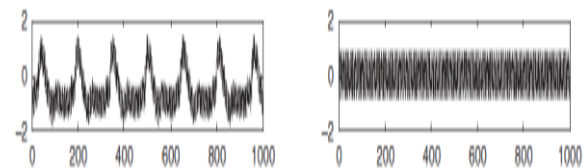


Fig (2): Flow Chart of VSS-CLLMS Fig (2): Methodology of Block Based Mode

IV. RESULTS AND DISCUSSIONS

In this section they studied on the SN cancellation, EN cancellation caused in TEB signal, This SN elimination is functional in 4 adaptive methods they are LMS, NLMS, BBNLMS and BBNSRLMS and those changes have been resembled in Sinusoidal Noise (SN) and Electrode Noise (EN) clearly in the Figure 4-6.



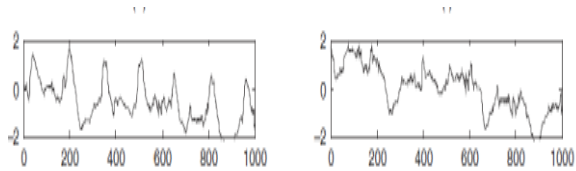


Figure (4) Distinctive filtering outcome for different SN
(a) TEB wave with SN, (b) retrieved SN module, (c) TEB wave with EN, (d) retrieved EN module

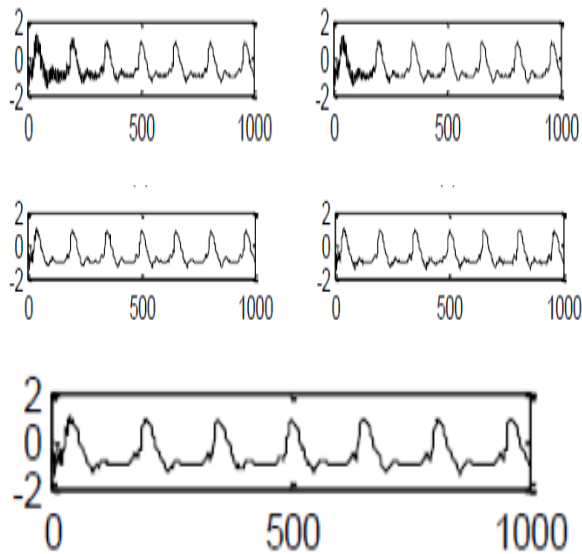


Fig. (5) : Distinctive frequency spectrums for SN elimination utilizing information normalization adaptive filtering methods: (a) TEB wave having SN, (b) retrieved wave having LMS algorithm, (c) retrieved wave having NLMS algorithm, (d) retrieved wave having BBNLMS algorithm, (e) retrieved wave having BBNSRLMS algorithm.

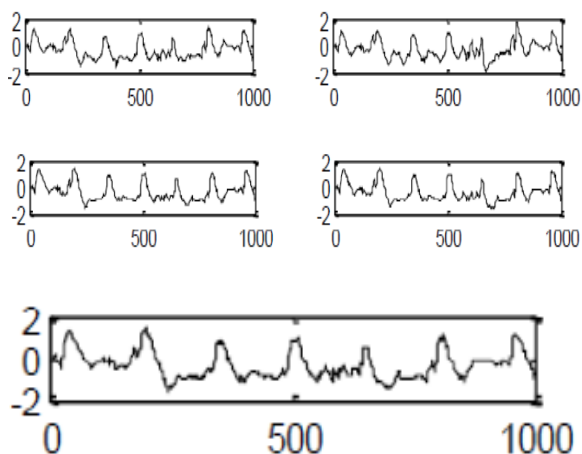


Figure (6) : Distinctive filtering outcomes for EN elimination having information normalization adaptive filtering methods: (a) TEB wave containing EN, (b) retrieved wave containing LMS algorithm, (c) retrieved wave containing NLMS algorithm, (d) retrieved wave containing BBNLMS algorithm, (e) retrieved wave containing BBNSRLMS algorithm.

TABLE1SNRI

Artifact	Data	LMS	NLMS	BBNL	BBNSR
----------	------	-----	------	------	-------

Type	Number			MS	LMS
SN	101	7.6241	14.6214	15.4472	16.2446
	102	7.1213	14.7182	15.4681	16.7926
	103	7.2357	14.5126	15.3412	16.3569
	104	7.9121	14.2472	15.4782	16.7126
	105	7.7128	14.7013	15.8324	16.5126
	Average	7.5212	14.5601	15.5134	16.5239
EN	101	5.4423	11.2262	12.1314	13.2356
	102	5.1013	11.4761	12.2467	13.6950
	103	5.9957	11.6011	12.6187	13.6693
	104	5.8671	11.4012	12.9126	13.7742
	105	5.5913	11.2471	12.9347	13.6531
	Average	5.5995	11.3903	12.5688	13.5633

And the five data values are taken and compared them among the four adaptive algorithms those are LMS, NLMS, BBNLMS and BBNSRLMS. We obtained perfect and noise less information's at the BBNSRLMS.

TABLE2EMSE

Artifact Type	Data Number	LMS	NLMS	BBNLMS	BBNSRLMS
SN	101	-30.5463	-30.2587	-31.3944	-32.2201
	102	-30.7982	-30.2423	-31.9003	-32.4657
	103	-30.1342	-30.7902	-31.6654	-32.4641
	104	-30.3356	-31.5543	-31.6653	-31.4532
	105	-30.7483	-31.7474	-31.3315	-32.9005
	Average	-30.5125	-30.9185	-31.5913	-32.3007
EN	101	-10.1094	-24.0354	-25.3123	-26.1569
	102	-10.9056	-24.4656	-25.1342	-26.2443
	103	-10.6789	-24.7895	-25.9073	-26.4657
	104	-10.1789	-24.8867	-25.7106	-26.7865
	105	-10.5389	-24.9985	-25.9982	-26.5673
	Average	-10.4823	-24.6351	-25.6125	-26.4441

By utilizing act calculates the SNRI, EMSE and MSD from the three we get good results at the BBNSRLMS Algorithm as monitored in the Table 1-3.

TABLE3MSD

Artifact Type	Data Number	LMS	NLMS	BBNLMS	BBNSRLMS
SN	101	0.0765	0.0655	0.0584	0.0497
	102	0.0712	0.0631	0.0576	0.0482
	103	0.0703	0.0611	0.0535	0.0447
	104	0.0712	0.0679	0.0505	0.0411
	105	0.0768	0.0673	0.0554	0.0422
	Average	0.0732	0.0649	0.0550	0.0451
EN	101	0.3709	0.2029	0.2452	0.2126
	102	0.3567	0.2952	0.2287	0.1417
	103	0.3003	0.2867	0.2198	0.1312
	104	0.3949	0.2386	0.2199	0.1816
	105	0.3703	0.2003	0.2293	0.2124
	Average	0.3586	0.2447	0.2285	0.1759

Furthermore BBNSRLMS adaptive modes respects the best characteristics evaluated with adaptive modes and demonstrated in Figure 4-6 from the act computes as shown in the Table 1-3.

V. CONCLUSION

Here in paper, method of pollutant elimination from TEB signals utilizing piece related adaptive algorithms in time and frequency domain are projected. The different enhancer compositions related to LMS, NLMS, BBNLMS and BBNSRLMS methods are raised for TEB noise elimination. From this, the primary and required retort waves are correctly selected, the eliminator outcomes the superlative least mean squared guesstimate of distinctive TEB pointer. The projected action develops changes in the credence modernize principle and accordingly results the good rapidity above the own BBNLMS related recognitions. Appropriate to block routing the multiplication convolution of the BBNLMS is lower than NLMS. After the convergence tempo is enlarged giving information and inaccuracy normalization. The conclusion of time domain (TD) eliminators in the frequency domain (FD) gets better decision, accurateness and filtering ability. Related to the replication result it is clear that the following ability of these methods are better among the TD recognitions. The SNRI, EMSE and MSD results are given in Table1-3. Since the figure 4-8 it outcomes that the SN and EN noises are minimized in BBNLMS and BBNSRLMS matched up to another methods as realized in figure. The purifying capability is confirmed with the SNRI status. Since SNRI results visualized in Table1, realizes the LMS, NLMS, BBNLMS and VSSBBNSRLMS furnishes the increased filtering. So far, in time domain Block Based filtering system causes because of the mean of the voltage of the

purified wave minimizes other than it betterly clears the noisy signal. Appropriate to minimization in voltage the SNRI will obtains minimized outcomes. In the two TD and FD removers normalization amplifies convergence and straining facility. Along with information and blunder normalization, slip normalized enhancers results enormously outstanding to spacious collection of noises are cleared due to BBNSRLMS algorithm. Then, the prospected Adaptive Noise Cancellers (ANC'S) results improved products among the other LMS techniques in expressions of EMSE, MSD, SNRI, convergence rate and Calculation part. So that in this entirely the convergence speed relates to step size and the number of blocks processed. So that at last the obstruct supported eliminating methods gives appropriate intended for wireless telecardiology relevance's in secluded medical methods. For SNRI the Sinusoidal Noise (SN) performs better for BBNSRLMS with value of 16.5239 dBs and Electrode Noise (EN) with value of 13.5633dBs.

REFERENCES

- Madhavi Mallam and K. Chandra Bhushana Rao, "Impedance Cardiography Signal Enhancement Using Wavelet Based Adaptive Artifact Cancellers for Remote Health Care Monitoring", Journal of Medical Imaging and Health Informatics, vol.7, no.1, pp.1-9, 2017.
- Shafi Shahsavari Mirza and Muhammad Zia, "Efficient Adaptive Filtering Techniques for Thoracic Electrical Bio-Impedance Analysis in Health Care Systems", Journal of Medical Imaging and Health Informatics Vol. 7, no.xx, pp.1-13, 2017.
- Muhammad Zia Ur Rahman and Shafi Shahsavari Mirza "Process techniques for human thoracic electrical bio-impedance signal in remote healthcare systems", Healthcare Technology Letters, vol.3, pp.124-128, 2016
- E. Pinheiro, O. Postolache, and P. Girão, "Contactless Impedance Cardiography Using Embedded Sensors", Measurement Science Review, vol.13, no.3, pp.157-164, 2013.
- Vinod K. Pandey, Prem C. Pandey, Nitin J. Burkule, and L.R. Subramanyan, "Adaptive Filtering for Suppression of Respiratory Artifact in Impedance Cardiography", 33rd Annual International conference of the EMBS Boston, Massachusetts USA, pp.7932-7936, August 30-september 3, 2011.
- Toney Sebastian, Prem C. Pandey, S. M. M. Naidu and Vinod K. Pandey "Wavelet Based Denoising for Suppression of Respiratory and Motion Artifacts in Impedance Cardiography", Computing in Cardiology, pp.83-141, 2011, 18th-21st Sept. 2011, Hangzhou, China
- Vinod K. Pandey and Prem C. Pandey, "Cancellation of Respiratory Artifact in Impedance Cardiography", Proceedings of the 2005 IEEE Engineering in Medicine and Biology 27th Annual Conference Shanghai, China, pp.1-4, September 2005.
- Vinod K. Pandey and Prem C. Pandey BME Group, Bio School, IIT Bombay, "Cancellation of Respiratory Artifact in Impedance Cardiography", Proceedings of the 2005 IEEE Engineering in Medicine and Biology 27th Annual Conference Shanghai, China, pp.1-4, September 2005.
- Vinod K. Pandey, Navaneetha Krishnan S. Naidu, and Prem C. Pandey BME Group, Bio School, IIT Bombay, "Tracking Based Baseline Restoration for Acquisition of Impedance Cardiogram and Other Biosignals", Proceedings of the 2005 IEEE Engineering in Medicine and Biology 27th Annual Conference Shanghai, China, pp.1-4, September 2005.
- Allan Kardcc Barros and Noboru Ohnishi, member, IEEE, "MSE Behavior of Biomedical Event-Related Filters", IEEE transactions on biomedical engineering, vol.44, no.9, September, 1997
- Madhavi Mallam and K. Chandra Bhushana Rao, "Efficient reference-free adaptive artifact cancellers for impedance cardiography based remote health care monitoring systems", IEEE engineering in medicine and biology magazine, pp.35-38, March, 1989.
- R.P. Patterson, "Fundamentals of Impedance Cardiography", IEEE engineering in medicine and biology magazine, pp.35-38, March, 1989.
- W.N. Hubbard, D.R. Fish and D.J. McBrien "The use of impedance cardiography in heart failure", International Journal of Cardiology, 12, pp.71-79, 1986

14. L Djordjevich, M.S. Sadove, J. Mayoral and A.D. jvankovich, "Correlation Between Arterial Blood Pressure Levels and(dZ/dt)min in Impedance Plethysmography", IEEE transactions on biomedical engineering, vol.BME-32,no.1,January,1985
15. K.Boone,D.Barber and B.Brown," ReviewImaging with electricity: Report of the EuropeanConcerted Action on Impedance Tomography",journal of medical engineering & technology, vol.21, no.6, pp.201-232
16. A.Ozan Bicen,member,IEEE,Nil Z.Gurel,student member,IEEE,Alexis Dorier,and Omer T.Inan Senior member,IEEE" Improved Pre-Ejection Period Estimation fromBallistocardiogram and Electrocardiogram Signalsby Fusing Multiple Timing Interval Features",IEEE sensors journal,vol.17,no.13,pp.4172-4180,23may,2017
17. Abdul Qadir Javaid,(student member,IEEE),Hazar Ashouri,Srini Tridandapani(senior member,IEEE) and Omer T.Inan(senior member,IEEE),"Elucidating the Hemodynamic Origin ofBallistocardiographic Forces: Toward ImprovedMonitoring of Cardiovascular Health at Home",IEEE journal of translational engineering in health and medicine,vol.4
18. Karin Jarverud," Studies of changes in volume in right ventriclewith electrical bio impedance",comes under licentiate thesis.
19. Nallamothu Sruthi Sudha,"Block based Normalized LMS Adaptive Filtering Technique for Denoising EEG Artefacts", International Journal of Current Engineering and Technology, vol.7, no.2, pp.386-389, April, 2017.
20. Xavier Navarro, "ECG removal in preterm EEG combining empirical mode decomposition and adaptive filtering", Proceedings of IEEE International Conference on Acoustics, Speech and Signal Processing(ICASSP), pp.661-664, 2012.
21. S. Olmos, L. Sornmo and P. Laguna, "Block adaptive filter with deterministic reference inputs for event-related signals : BLMS and BRLS", IEEE Transactions on Signal Processing, vol. 50, pp.1102-1112, 2002 .
22. D-H Shin, R-H Park, S Yang, and J-H Jung, "Block-Based Noise Estimation Using Adaptive Gaussian Filtering", IEEE Transactions on Consumer Electronics, vol. 51, no. 1, pp.218-226, 2005.
23. M J. Narasimha, "Block Adaptive Filter With Time-Domain Update Using Three Transforms", IEEE Signal Processing Letters, vol. 14, no. 1, pp. 51-53, 2007.
24. Y. Zhang, "Cardiac output monitoring by impedance cardiography during treadmill exercise," IEEE Trans. Biomed. Eng., vol. BME-33, pp.1037-1042, Nov. 1986.
25. E. Raaijmakers, T. J. Faes, H. G. Goovaerts, J. H. Meijer, P. M. deVries, and R. M. Heethaar, "Thoracic geometry and its relation to electrical current distribution: Consequences for electrode placement in electrical impedance cardiography," Med. Biol.Eng. Comput., vol. 36, pp.592-597, 1998.
26. B. Balestra, R. Malacrida, L. Leonardi, P. Suter, and C. Marone, "Esophageal electrodes allow precise assessment of cardiac output by bioimpedance," Crit. Care Med., vol. 20, pp. 62-67, 1992.
27. K. R. Visser, R. Lamberts, andW. G. Zijlstra, "Investigation of the origin of the impedance cardiogram by means of exchange transfusion with stroma free haemoglobin solution in the dog," Cardiovasc. Res., vol. 24, pp. 24-32, 1990.
28. A. K. Barros, M. Yoshizawa, and Y. Yasuda, "Filtering noncorrelated noise in impedance cardiography," IEEE Trans. Biomed. Eng., vol. 42, pp. 324-327, 1995.
29. C. N. Riviere and N. V. Thakor, "Assistive computer interface for pen input by persons with tremor," presented at RESNA 1995 Annu. Conf., Vancouver, BC, 1995.



Dr. C. Arunabala, M. Tech, PhD is having 25 years of teaching experience. Presently she is working as Professor in Department of ECE, KKR&KSR Institute of Technology and Sciences (KITS), Guntur. Her areas of interest are VLSI, Embedded systems, Digital systems and Image processing.

AUTHORS PROFILE



N.Soniya, received her B.Tech degree from KKR & KSR Institute of Technology and Sciences, Vinjanampadu, Guntur(D.t) and M.tech from KKR&KSR Institute of Technology and Sciences, Vinjanampadu, Guntur(Dt). And have 2 years of teaching experience as an Assistant professor in Various engineering colleges, currently working in KKR&KSR Institute of Technology and Sciences,

Vinjanampadu, Guntur(Dt). Totally 11 publications are there in various journals. Areas of interests are VLSI, Signal Processing, and wireless communication.